



PT. SAHABAT MEWAH DAN MAKMUR

(Member of Austindo Nusantara Jaya Agri)

Belitung Timur Regency, Kepulauan Bangka Belitung Province

Indonesia

Summary of SIA dan HCV Report

October 2015

Summary of SIA and HCV Assessment Report

1. Executive Summary

Partnership Plantation Area of PT. Sahabat Mewah dan Makmur (PT. SMM) has obtained Calon Petani Calon Lahan (CPCL) for 322 (three hundreds twenty two) farmers that signed by Head of East Belitung Regency, covering area of 599,50 Ha. Kemitraan PT. SMM located in Dendang Village, Simpang Tiga Village, Simpang Pesak Village, Tanjung Kelumpang Village and Limbongan Village. These villages are in Dendang District, Simpang Renggang District, Simpang Pesak District and Gantung District. All location are in East Belitung Regency, Bangka Belitung Province.

Table 01. Area of Plantation Partnership Program PT. SMM

No	Village	District	Farmers	Area (Ha)
1	Dendang	Dendang	43	54,0
2	Simpang Tiga	Simpang Renggang	30	49,0
3	Simpang Pesak	Simpang Pesak	34	66,5
4	Tanjung Kelumpang	Simpang Pesak	32	64,0
5	Limbongan	Gantung	183	366,0
			322	599,5

Scope area of SIA Assessment is covering some villages such as Dendang, Balok, Nyuruk, Jangkang, Jangkar Asam, Lilangan, Limbongan, Batu Penyu, Tanjung Kelumpang, Simpang Pesak, Dukong, Simpang Tiga, Renggang, and Kelubi. This assessment conducted to identify the socio-economy condition of the community, issue, problems, the impact of the partnership plantation, assess the implementation of the social activity the company has done, examine the perceptions, expectations and desires of the communities, identify the stakeholders associated with the corporate events and formulated a plan for the management and monitoring of the social enterprise.

In 2014 PT. SMM hired Faculty of Forestry Bogor Agriculture Institute Lead by Dr. Ir. Nyoto Santoso, MSi. a RSPO approved HCV Lead Assessor to conduct HCV and SIA assessment with a team of experts.

Based on the result of HCV Assessment, there is no primary forest found in the Partnership Plantation area of PT SMM. The forests that still exist are in the form of secondary forest, shrub, bush, open land, water body, oil palm plant,. In general, founded on the HCV Assessments, HCV 1 (HCV1.2 area of 0.5 Ha, HCV 4 (HCV4.1 area of 7.27 Ha) and HCV 6 area of 0.75 Ha. Some area has been found to contain more than one HCV.

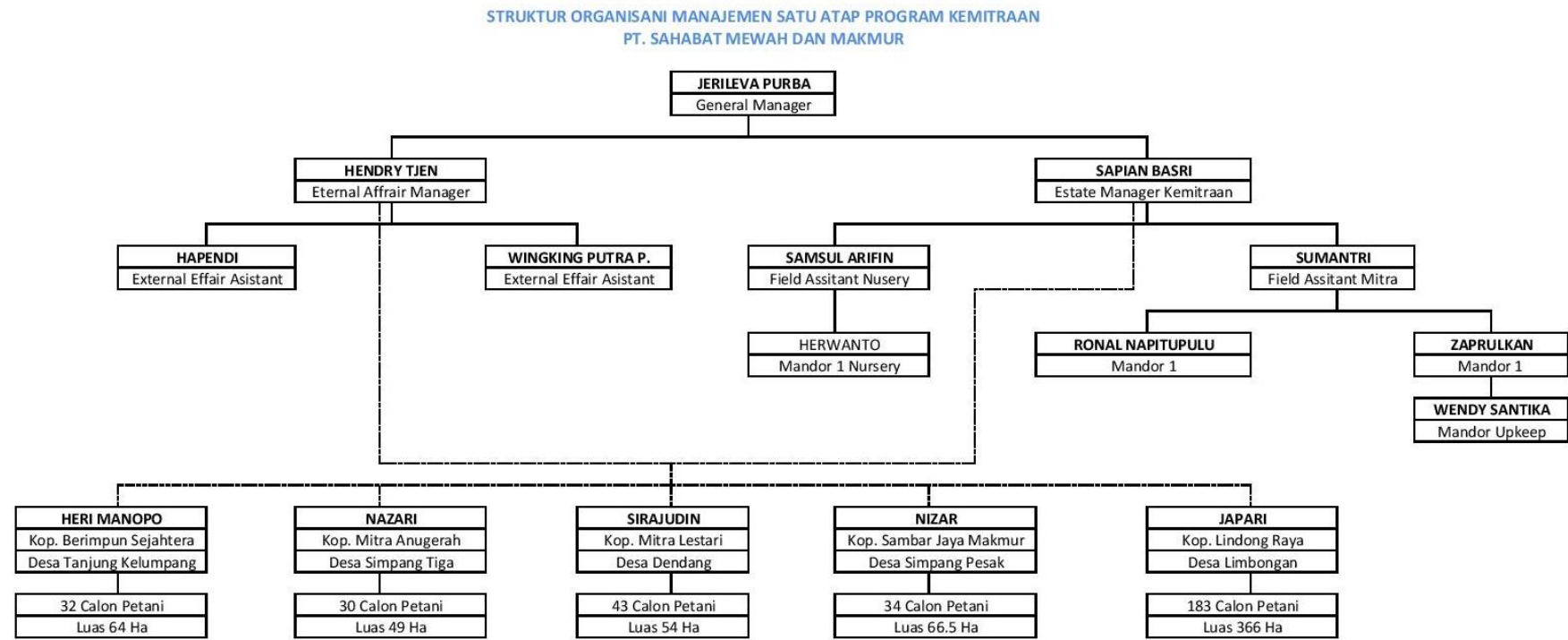
The area of partnership plantation of PT. SMM consist of 5 (five) unit of soil type, which are : Soil Association of Podsolik Plintik and Podsolik Haplik, Soil Association of Podsolik Kandik and Oksisol Haplik, Podsolik Plintik, Podsolik Haplik and Podsolik Kandik.

2. Scope of The HCV & SIA Assessment

Company Information and Contact Person

Company Name	: Partnership Plantation Area of PT. Sahabat Mewah dan Makmur
RSPO Membership Number	: 1-0032-07-000-00 (registered as PT. Austindo Nusantara Jaya Agri)
Capital Status	: Foreign Investment
Project Address	: Dendang, Gantung, Simpang Pesak and Simpang Renggang District, those District are belongs to Belitung Timur Regency, Kepulauan Bangka Belitung Province
Head Office Address	: Gedung Atrium Mulia, Jl. HR. Rasuna Said, Kav. B 10-11, Kuningan Jakarta Selatan, 12910
Telephone	: +62-21-1965177
Type of Business	: Oil Palm Plantation and Mill
Contact Person	: antoperis.tarigan@anj-group.com

Figure 01. Organizational Chart of PT. SMM Plantation Partnership Program

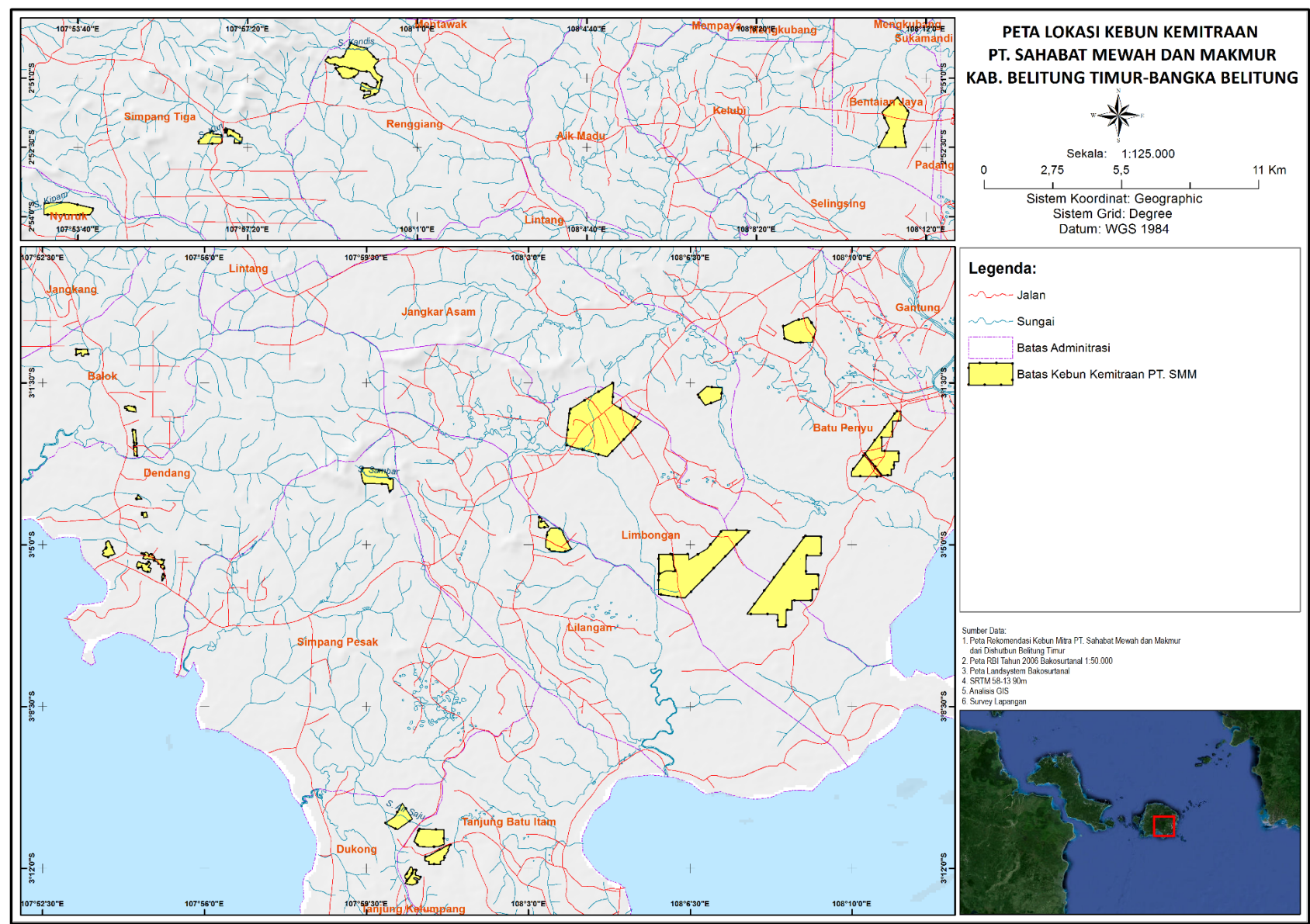


List of Legal Documents Plantation Partnership Program of PT. SMM

1. Bupati (Head of Regency) Decree of Belitung Timur Regency No 188.45-260 Year 2015 about Calon Petani Calon Lahan (Prospective Farmers and Prospective Land) members of Palm Oil Plantation Partnership Program between Berimpun Farmers Group, Tanjung Kelumpang Village, Simpang Pesak District and PT. Sahabat Mewah dan Makmur, for area 64 Ha.
2. Bupati (Head of Regency) Decree of Belitung Timur Regency No 188.45-104 Year 2015 about Calon Petani Calon Lahan (Prospective Farmers and Prospective Land) members of Palm Oil Plantation Partnership Program between Sambar Jaya Makmur Farmers Group, Simpang Pesak Village, Simpang Pesak District and PT. Sahabat Mewah dan Makmur, for area 70,5 Ha.
3. Bupati (Head of Regency) Decree of Belitung Timur Regency No 188.45-641 Year 2012 about Calon Petani Calon Lahan (Prospective Farmers and Prospective Land) members of Palm Oil Plantation Partnership Program between Farmers of Dendang Village, Dendang District and PT. Sahabat Mewah dan Makmur, for area 59,5 Ha)
4. Bupati (Head of Regency) Decree of Belitung Timur Regency No 188.45-778 Year 2014 about Calon Petani Calon Lahan (Prospective Farmers and Prospective Land) members of Palm Oil Plantation Partnership Program between Farmers of Simpang Tiga Village, Simpang Renggang District and PT. Sahabat Mewah dan Makmur, for area 52 Ha.
5. Bupati (Head of Regency) Decree of Belitung Timur Regency No 188.45-108 Year 2015 about Calon Petani Calon Lahan (Prospective Farmers and Prospective Land) members of Palm Oil Plantation Partnership Program between Farmers of Limbongan Village, Gantung District and PT. Sahabat Mewah dan Makmur, for area 366 Ha.
6. Statement of Environmental Management and Monitoring Undertaking (Surat Pernyataan Kesanggupan Pengelolaan dan Pemantauan Lingkungan Hidup/SPPL) from 43 (forty tree) farmers of Dendang Village for area 54 Ha.
7. Statement of Environmental Management and Monitoring Undertaking (Surat Pernyataan Kesanggupan Pengelolaan dan Pemantauan Lingkungan Hidup/SPPL) from 30 (thirty) farmers of Simpang Tiga Village for area 49 Ha.
8. Statement of Environmental Management and Monitoring Undertaking (Surat Pernyataan Kesanggupan Pengelolaan dan Pemantauan Lingkungan Hidup/SPPL) from 34 (thirty four) farmers of Simpang Pesak Village for area 66,5 Ha.

9. Statement of Environmental Management and Monitoring Undertaking (Surat Pernyataan Kesanggupan Pengelolaan dan Pemantauan Lingkungan Hidup/SPPL) from 32 (thirty two) farmers of Tanjung Kelumpang Village for area 64 Ha.
 10. Bupati (Head of Regency) Decree of Belitung Timur Regency No 503/018/IL/BPMPT/2015 Year 2015 about Environment Permit of Plantation Partnership Program, Limbongan Village, Gantung District, Belitung Timur Regency.
 11. Statement of High Conservation Value Management and Monitoring Undertaking between Mitra Lestari Cooperative of Dendang Village and PT. SMM management.
 12. Statement of High Conservation Value Management and Monitoring Undertaking between Mitra Anugrah Cooperative of Simpang Tiga Village and PT. SMM management.
 13. Statement of High Conservation Value Management and Monitoring Undertaking between Sambar Jaya Makmur Cooperative of Simpang Pesak Village and PT. SMM management.
 14. Statement of High Conservation Value Management and Monitoring Undertaking between Berimpun Raya Cooperative of Tanjung Kelumpang Village and PT. SMM management.
 15. Statement of Social Impact Assessment Management and Monitoring Undertaking between Mitra Lestari Cooperative of Dendang Village and PT. SMM management.
 16. Statement of Social Impact Assessment Management and Monitoring Undertaking between Mitra Anugrah Cooperative of Simpang Tiga Village and PT. SMM management.
 17. Statement of Social Impact Assessment Management and Monitoring Undertaking between Sambar Jaya Makmur Cooperative of Simpang Pesak Village and PT. SMM management.
 18. Statement of Social Impact Assessment Management and Monitoring Undertaking between Berimpun Raya Cooperative of Tanjung Kelumpang Village and PT. SMM management.
- .

Figure 02. Location of Plantation Partnership Program PT. Sahabat Mewah and Makmur



3. Assessment Process and Procedure

HCV Assessor team, which involved experts in Biodiversity, Environmental Services, Social and Culture and Supported by Geographic's Information System (GIS) expert, had conduct field data collection began on 3 November 2014 until 6 November 2014. Data collection was facilitated by PT. SMM staff and assisted by the village community. Likewise with Social Impact Assessment (SIA) that conducted in the same time.

The HCV and SIA assessment of Plantation Partnership Program of PT. SMM lead by Dr. Ir. Nyoto Santoso, MSi. a RSPO approved HCV Assessor with capacity as Team Leader. His expertise is in Biodiversity Management and Conservation. He was assisted by HCV experts from Bogor Agriculture Institute. The HCV Assessment Methodology is described in Table 02, below:

Table.02 HCV Assessment Process, Methodology, and Data Achievement

Assessment Process	Methodology	Data Achievement
Mapping and Landscape	Field data collection to verify secondary data and information such as protected/conservation area, road, river, boundaries, soil types and classes, topography, and; to conduct a comprehensive overview of the area.	Mapping all data and information found into a map and conducting analyses on it.
Fauna (Wildlife) Aspect	Qualitative field assessment (<i>rapid assessment</i>). Direct field observation; interview and discussion with stakeholder, such as local community, staffs of the company and other related parties.	Qualitative condition of the habitat; endangered, critical and protected wildlife species within the list of IUCN and the prevailing regulation and its distribution; location of wildlife species encounter; reduced wildlife habitat

Flora Aspect	Interview and direct field survey; initial mapping of ecosystem distribution; observation on forest structure, species density or dominance on each type of ecosystem	Data of flora with particular status, species protected by the Indonesia government or assumed to be endangered in the IUCN list. Threat and opportunity to maintain the area.
Social, Economic, and Cultural Aspect	Interview and field visit using FGD (<i>Focus Group Discussion</i>) and list of structured questions.; collection data on the village's demography, custom, culture and community's relation with forest.	Traditionally protected area, level of dependency toward the area, environmental services related to the assessed area.

SIA Assessment used 3 (three) methods, namely:

1. Secondary Data Collection, achieved from relevant parties, to establish the identification and analysis of SIA document PT SMM Partnership Plantation Area.
2. Field Observation, to achieve information through direct field monitoring about anything related to social economy condition within and around PT SMM Partnership Plantation Area.
3. Interview, to deeply know about problems appropriate with expertise and authority of each key respondent.

HCV Consultation Public held on November 5th, 2014 in PT. SMM Office,. This Consultation Public was conducted to obtain feedback toward HCV findings from related parties. The process of Public Consultation, and the feedback and commentary from the participants was documented to provide inputs in finalization of HCV and SIA Report.

Public Consultation was attended by the Faculty of forestry Bogor Agriculture Institute, PT SMM employee, Forestry Service of Belitung Timur, Plantation Service of Belitung Timur, Local government, Head of Custom and head of the villages.

4.a. Summary of SIA Findings

Demography. The location permit of PT SMM Partnership Plantation Area located in Dendang, Gantung, Simpang Pesak and Manggar (Belitung Timur Regency), Kepulauan Bangka Belitung Province, with the total population of 30,943 peoples, with the Ethnicity population dominated by Melayu (Belitung), and in majority Moslem. Community primary livelihoods are farmer, the education facilities are Elementary School, Junior High School and Senior High School. The health facilities provided are Puskesmas, Puskesmasdes, Posyandu and Polindes.

Economy. The main income for Community is Pepper Farmer, Rubber Farmer, and worker at plantation or mining with average income per month in 2014 based on sampling data is about Rp. 1.640.000,- up to Rp. 4.352.000,-/month.

Socio-Cultural Aspect. Community around PT SMM are open to accept the village development programs by government, community also make relationship/communication and cooperation with the outsider/immigrant such as PT. SMM workers. The communities still maintain local culture such as religious day and custom ceremony.

Environmental Aspect. At the moments, communities feel there is no significant impact of company activities, the community still can get a clear water from the river that exist around their villages both in dry and rain season.

Strategic Issues. Based on the result of Forum Group Discussion (FGD), the community want the Partnership Plantation Project with PT. SMM will be start immediately. The Plantation Partnership program are using the land that owned by the community. The community gives the land for palm oil to increase the community income. It makes no issues about land ownership. The main issue is community want the project will be start immediately.